



cetic

Your connection to
ICT research



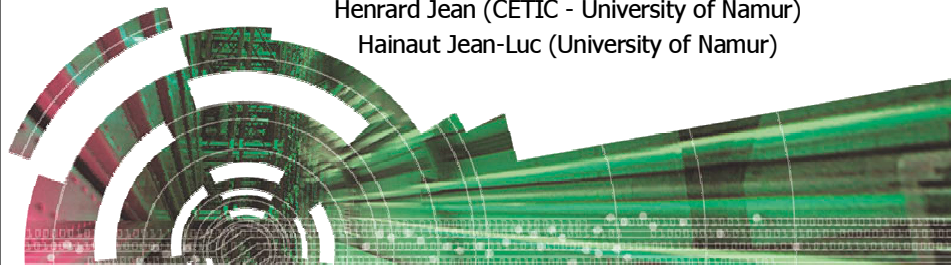
A tool-supported method to extract data and schema from web sites

Estiévenart Fabrice (CETIC)

François Aurore (CETIC)

Henrard Jean (CETIC - University of Namur)

Hainaut Jean-Luc (University of Namur)



cetic

Your connection to
ICT research



Context

■ Still many static web sites...

● Advantage

- low cost
- easy to create
- → for small web sites

● Drawbacks

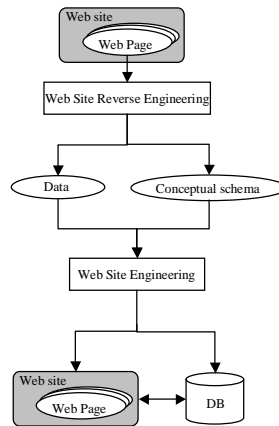
- data and layout are mixed up
- maintenance problems
- → out-of-date or redundant information
- → non-homogeneous design

● Solution

- DBMS + scripts (PHP, Perl,...)

Goals

- To provide methods and tools for web sites reengineering :

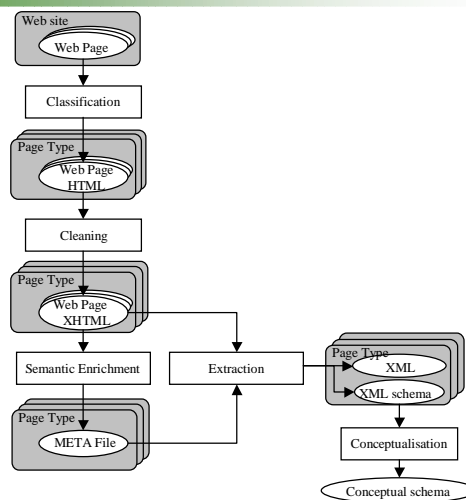


22/09/2003

- WSE 2003 (Amsterdam) -

3

Method : overview



22/09/2003

- WSE 2003 (Amsterdam) -

4



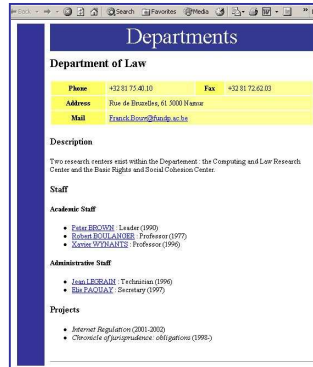
Your connection to ICT research



Method : step 1

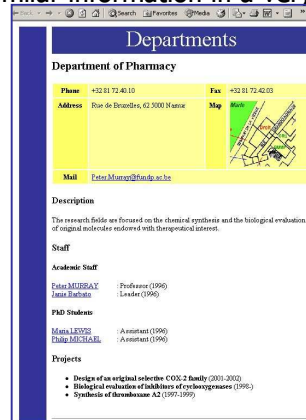
Pages classification

- « Page type » = a set of pages relative to the same concept, that display very similar information in a very similar layout



22/09/2003

- WSE 2003 (Amsterdam) -



5



Your connection to ICT research



Method : steps 2 and 3.1

HTML cleaning

Semantic enrichment

- For each page type

- Concepts identification and description on a sample page

- « Concept » = a part of the HTML tree describing the layout, the structure and possibly the value of a certain reality
- Ex : the concept « Phone Number »

```
<tr>
  <td align="middle" bgcolor="#FFFF66">
    <b>Phone :</b>
  </td>
  <td bgcolor="#FFFF99">+32 71 72.23.49</td>
</tr>
```

- Ex : the concept « Address » composed of « Street » and « City »

```
<table width="100%">
  <tr><td><b>Address :</b></td></tr>
  <tr><td>Quality Street, 25</td></tr>
  <tr><td>London</td></tr>
</table>
```

22/09/2003

- WSE 2003 (Amsterdam) -

6



Your connection to
ICT research



Method : the META file

```

<HTMLDescription xmlns:meta="http://www.cetic.be/FR/CRAQ-DB.htm">
  <meta:element name="Department">
    <html>
      <head>...</head>
      <body>
        <table>
          <meta:element ref="DeptName"/>
          <meta:element ref="PhoneNumber"/>
          <meta:element ref="Address"/>
        </table>
      </body>
    </html>
  </meta:element>
  <meta:element name="PhoneNumber">
    <tr>
      <td align="middle" bgcolor="#FFFF66"><b>Phone :</b></td>
      <td bgcolor="#FFFF99"><meta:value/></td>
    </tr>
  </meta:element>
  ...
</HTMLDescription>

```

22/09/2003

- WSE 2003 (Amsterdam) -

7



Your connection to
ICT research



Method : step 3.2

- Application to other pages of the same type
 - there may be layout and structure differences between pages of the same type → a same concept may have several descriptions
 - **Example** : a layout difference

```

<tr>
  <td><b>Name :</b></td>
  <td><i>Name :</i></td>
</tr>

```

- **Example** : a structure difference

```

<table width="100%">
  <tr><td>Address :</td></tr>
  <tr><td>Quality Street, 25</td></tr>
  <tr><td>London</td></tr>
</table>

<table width="100%">
  <tr><td>Address :</td></tr>
  <tr><td>New York</td></tr>
  <tr><td>Main Street, 110</td></tr>
</table>

```

22/09/2003

- WSE 2003 (Amsterdam) -

8

Method : step 4

Data and schema extraction – for each page type

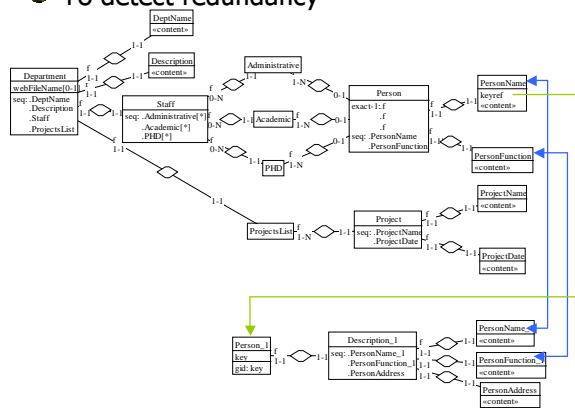
- Data extraction
 - Web pages + META file → XML document
- Data structure extraction
 - META file → XML schema



Method : step 5.1

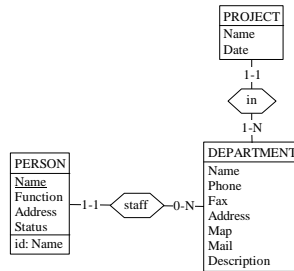
Schema integration

- To discover relationships between concepts
- To detect redundancy



Method : step 5.2

■ Schema conceptualisation



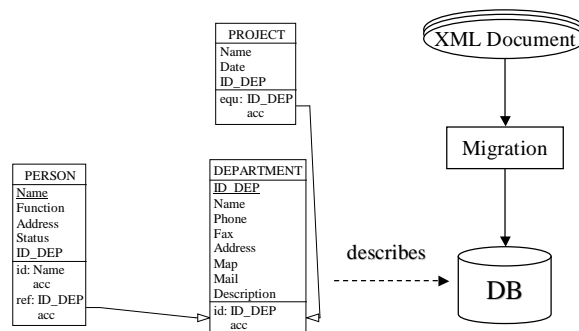
22/09/2003

- WSE 2003 (Amsterdam) -

11

Web Site Engineering

■ Database engineering + Data migration



22/09/2003

- WSE 2003 (Amsterdam) -

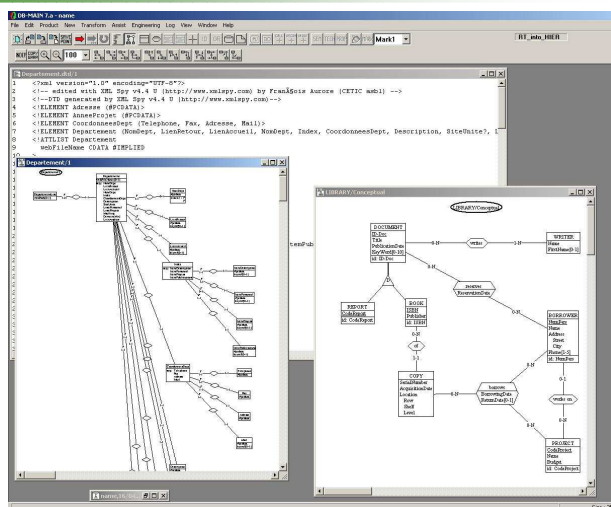
12

Tools

- HTML cleaning
 - Tidy
- Semantic enrichment
 - XML editor or the semantic browser (based on Mozilla) to edit/generate the META file
- Data and schema extraction
 - XML parsers (Java DOM)
 - `pageType.extractSchema(METAfile) → XMLSchema`
 - `pageType.extractData(HTML*, METAfile) → XML`
- Schemas integration/conceptualisation and database engineering
 - CASE tool DB-Main



DB-Main (<http://www.db-main.be>)



Conclusion and future work

- A method and tools to extract from a web site data and their structure
- Difficulty : enormous diversity of web pages structures and layouts to represent the same reality
- Future work
 - test on real-size web sites
 - refine the semantic enrichment step
 - improve GUI
 - automation/assistance based on heuristics

